


*Aspex Incorporated*

 *Aspex Incorporated*  
Makers of the SpinTrak™ System

**SpinTrak**<sup>TM</sup>  
Spinneret Inspection System



## WHY SPINTRAK™

- SpinTrak™ is the world's first fully automatic spinneret inspection system pioneered by Aspex.
- SpinTrak™ is the most trusted spinneret inspection system, preferred and chosen by almost all well known major yarn, fiber, spunbond, meltblown and spinneret manufacturers.
- SpinTrak™ is the market leader with the largest number of installations world-wide.
- SpinTrak™ is produced by high quality American manufacturing standards and is proven to be virtually maintenance-free.
- Strong after sales support via email, phone or even direct remote connection to the machine providing the most efficient method of service.
- Single fully integrated circuit board design for easy replacement in the rare event of a failure.
- Controller housed in an airtight enclosure, offering protection against harsh and corrosive environments.
- SpinTrak™ is available in different models and size configurations to suit customized applications throughput requirements and spinneret sizes.

## KEY BENEFITS FOR SPUNBOND / MELTBLOWN APPLICATIONS

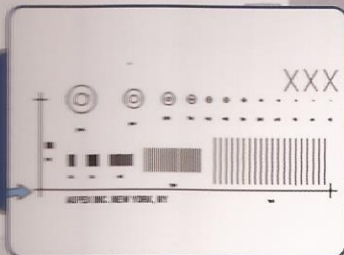
- Eliminates human subjectivity and fatigue associated with manual inspection detects problems which light boxes miss..
- Significant reduction in scrap generation due to quick and easy detection of problematic capillaries. Reduction of plugging and faster start-ups in nonwovens lines.
- Visual map of inspection helps identify problem "regions" in the die caused from flaws in the cleaning process or damage.
- In Spunbond/meltblown extrusion process problems such as slow holes, drips, stoppages and dog legs are detected. Helps maximise yield performance with reduced rejects and defects.
- Approved and recommended inspection system by leading non-woven technology suppliers.
- Highly automated and can run unattended overnight or extended hours

## KEY BENEFITS FOR YARN / FIBER APPLICATIONS

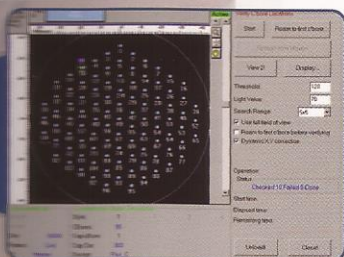
- Improves Yarn Quality
- Helps to reduce broken or missing filaments/fibers
- Eliminates pack failures due to spinneret problems. Better maintained spinneret conditions extend pack life.
- Fast and accurate inspection , capable of running unattended. Facilitates quick turnaround of large volume of spinnerets & optimize the usage of human labour.
- Able to adapt to any kind of spinneret irrespective of shape or dimension.
- Ability to inspect all complex capillary shapes and permits measurements of non-standard dimensions as per requirement.



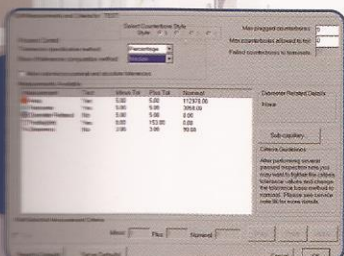
## IMPORTANT FEATURES OF SPINTRAK™ SYSTEM



Built-in certified glass protected reticle scale for automatic self-calibration before every inspection which is ideal for process/quality certifications such as ISO



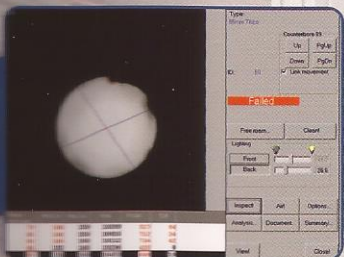
Automatic learn feature allows SpinTrak™ to learn new capillary patterns and sizes by scanning the spinneret in low magnification.



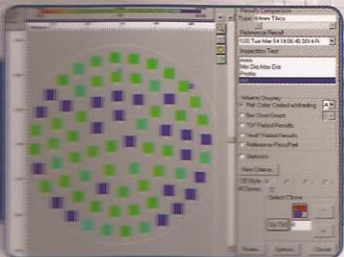
Pass-Fail Criteria is easily established by selecting measurements, tolerances, number of acceptable failed capillaries, number of acceptable plugged capillaries, and more.

Control	Capillary ID	Status	Unplugged Plugged	Trigger Plugged
1	001	Passed	0	0
2	777	Failed	0	5
3	006	Failed	0	1
4	007	Passed	0	1
5	009	Failed	0	1
6	006	Passed	0	1
7	005	Failed	0	1
8	10	Failed	0	0

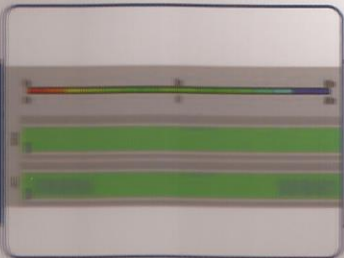
Every inspected spinneret is objectively qualified as either "Passed" or "Failed", as per the set inspection criteria.



Inspection review tools include on-screen capillary images, measurement data, free roam control, and report generation.



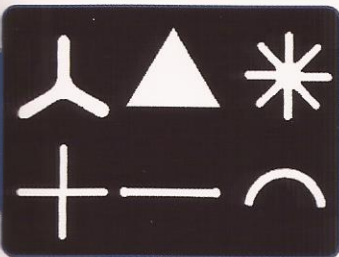
Inspection data is stored for data analysis, using pictorial and graphical representations to provide insight into the cleaning and extrusion processes.



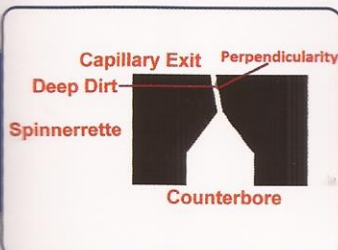
Nonwoven Spinneret Review Section  
A - Spinneret with many dirty capillaries  
B - Same Spinneret after proper cleaning



## IMPORTANT FEATURES OF SPINTRAK™ SYSTEM



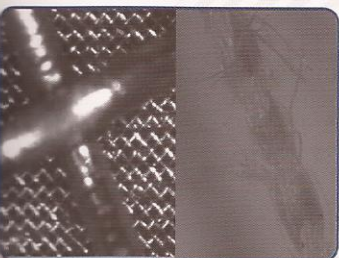
Inspects all types of capillaries, including complex cross sections and multilocular cross sections used for bi-component and hollow fibers.



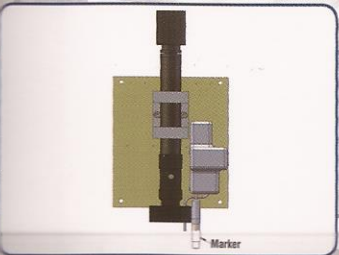
Unique capability of checking capillary perpendicularity.

[illegible]

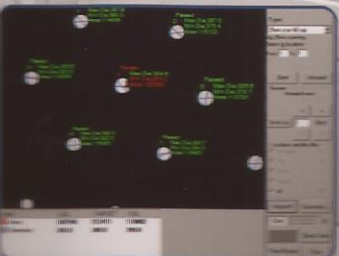
Advanced dirt detection capability to detect dirt on capillary exit as well as deep inside the capillary.



Provision to visually inspect any random object other than spinnerets at high magnification.



Built-in automatic marking system marks the failed capillaries with an erasable dye.



Rapid inspection mode\* inspects multiple capillaries in a single view when required.

- Variable zoom allows inspection at the optimum magnification possible irrespective of capillary size resulting in high accuracy measurements and superior dirt detection capability.
- Inspection time unaffected by capillary shape or by number of measurements.
- Maintenance free micro-stepper motors ensure accurate movement on all axis without employing problematic encoder feedback.
- Provision to view counter bores\* of spinnerets during inspection.

\* Select Models

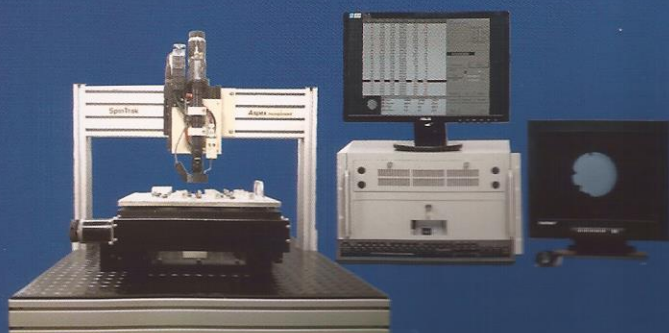


## BENCH TOP MODEL



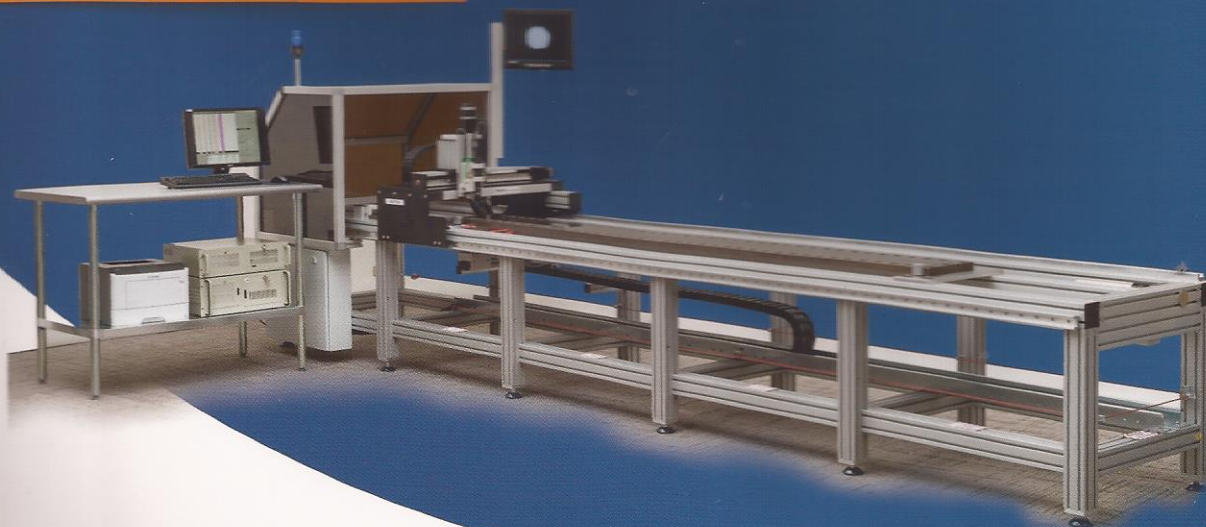
Model	Insp. area (mm x mm)	Speed (sec/cap)	Most common Application
B25	250 x 250	0.3-1.25	Yarn/staple
B40	400 x 500	0.3-1.25	Yarn/staple
B90	500 x 900	0.3-1.25	Yarn/staple

## TABLE TOP MODEL



Model	Insp. area (mm x mm)	Speed (sec/cap)	Most common Application
T25	250 x 250	0.3	Yarn/staple
T35	350 x 350	0.3	Yarn/staple

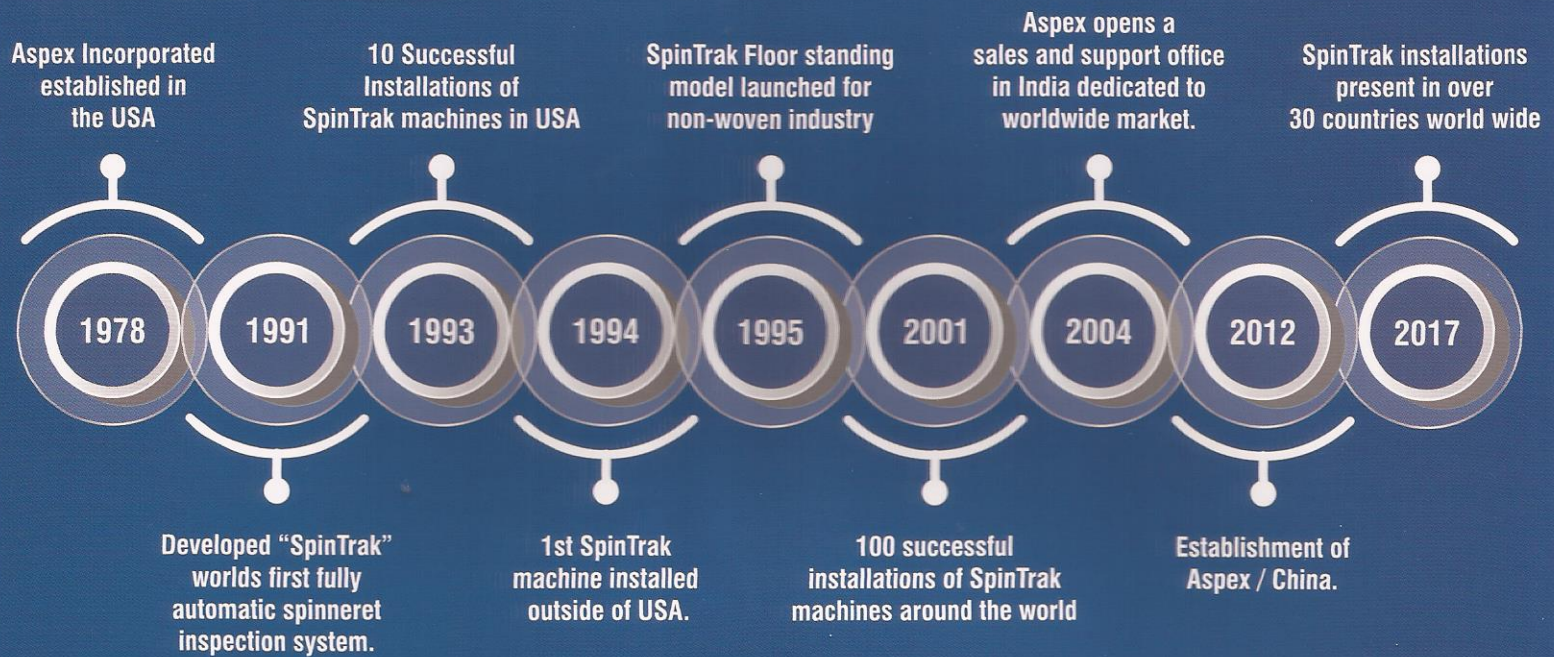
## FLOOR STANDING MODEL



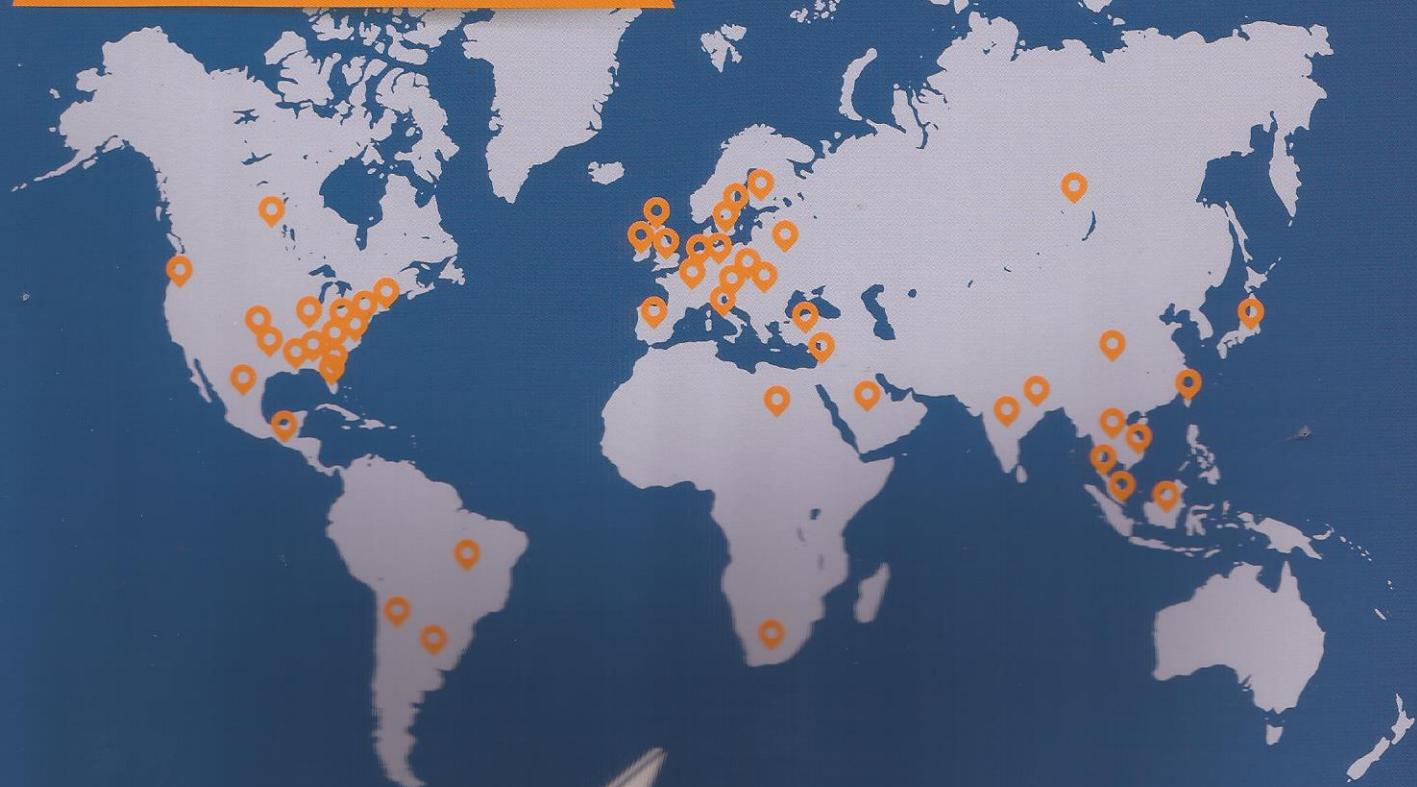
Model	Length	Inspection Area (mm x mm)	Speed (sec/cap)	Most common Application
F-3 M	3 M	Upto 1800 x 500	0.3	Yarn / staple / Non-wovens
F-5 M	5 M	Upto 3800 x 500	0.3	Non-wovens
F-6 M	6 M	Upto 4800 x 500	0.3	Non-wovens
F-7 M	7 M	Upto 5800 x 500	0.3	Non-wovens
F135(with or without conveyor)	1M	1050 x 300	1.00	Yarn / staple / Non-wovens



## MILESTONES



## ASPEX'S WORLDWIDE PRESENCE



**Aspex Incorporated**  
Makers of the SpinTrak™ System

161 Hudson Street,  
New York, NY 10013, USA.  
Phone: (212) 966-0410  
Fax: (212) 966-2289  
sales@spintrak.com

203 - Road  
Road M  
Mumb  
Tel: +  
Fax: +  
sales@spintrak.com



**Measured Solutions, Inc.**

*Trusted Resource. Precise Results.*

103 Pilgrim Road  
Greenville, SC 29607  
(864) 331-1810 Fax (864) 281-7744

[www.spintrak.com](http://www.spintrak.com)